



MEMBER OF SSC GROUP

LESEDI DRILLING CORPORATE PROFILE 2025





MEMBER OF SSC GROUP

Introduction to Lesedi Drilling

2

ABOUT US



Lesedi Drilling, a member of the SSC Group, is a **100% Black-Owned**, Level 2 BBBEE company with over 23 years of experience in underground and surface exploration diamond drilling.

We specialize in operating Pneumatic, Hydraulic and LM machines and consistently drill over 140,000 meters annually.

WHAT WE DO



We employ about 400 people, delivering **safe exploration drilling services** to top-tier mining clients. Lesedi Drilling deploys state-of-the-art drill rigs with competently trained operators and supervision ensuring constant results for our clients.

INNOVATION



Lesedi Drilling utilizes **locally manufactured** drilling accessories including drill bits and rods manufactured by its associated local supplier, ensuring that innovation, product development, and productivity are key to our service offerings.

CLIENT-FOCUSED



Lesedi Drilling strives for excellence in every aspect of service delivery, continually evolving in meeting the changing demands of the mining sector and in particular ensuring that we **meet our client's expectations** without compromising the safety of our employees.



MEMBER OF SSC GROUP

Delivering
quality
exploration
drilling services
for over 23 years

WHY CHOOSE LESEDI DRILLING

EXPERIENCE

With over 23 years of experience, we bring unparalleled expertise to every project.

INNOVATION

We stay ahead of the competition by constantly evolving and incorporating the latest drilling technologies.

LOCAL MANUFACTURING

We utilise drill bits and rods manufactured locally by one of our associate companies.



SAFETY

Safety is our top priority, and we have a proven track record of delivering safe, compliant services.

EMPOWERMENT AND TRANSFORMATION

We are 100% Black-owned, with a strong commitment to empowerment and transformation in the South African mining industry.



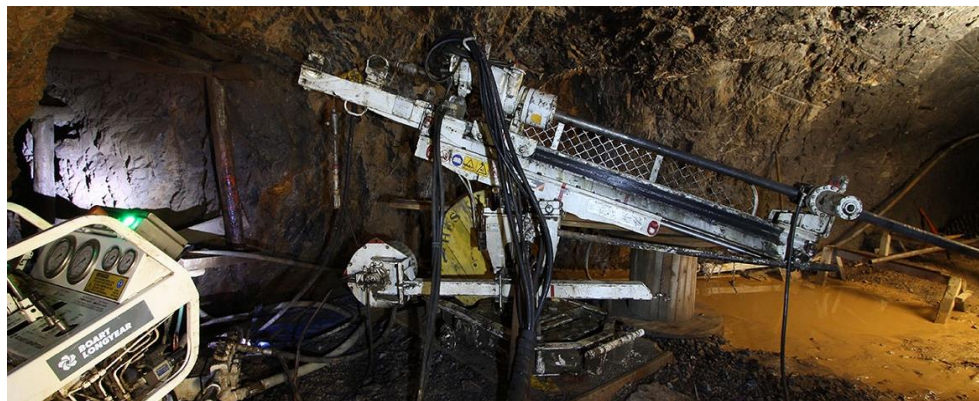
MEMBER OF SSC GROUP

Lesedi Drilling offers a comprehensive range of services to meet the unique needs of the mining industry

RANGE OF SERVICES

Underground Exploration Diamond Drilling

We specialize in exploration and cover drilling, providing accurate core samples to help geologists assess reef location and ore quality for mine planning. Our expertise ensures precision, safety, and efficiency in all drilling operations.



Surface Exploration Drilling

From mineral exploration to geological data collection, our surface drilling services ensure efficient and accurate results. We use advanced technology to reach optimal depths and provide valuable geological insights meeting the needs of the clients' mineral resource team.





MEMBER OF SSC GROUP

Safety is a non-negotiable and each employee has the right to return home unharmed from work each day

SAFETY

Safety is at the heart of everything we do at Lesedi Drilling. It's more than just a priority – it's a core value embedded into every process, system, and decision we make. Our safety protocols are meticulously designed to protect our employees, clients, and the environment.

Risk Management Programs

We utilize predictive analytics and thorough risk assessments to mitigate potential hazards before they arise.



Emergency Readiness

State-of-the-art equipment combined with regular drills ensures that we are always prepared to respond swiftly and efficiently to any incident.

Employee Empowerment

Every employee undergoes extensive training, ensuring they are well-equipped to handle any scenario safely and effectively

Safety isn't just a checkbox for us; it's the bedrock of our success. With Lesedi Drilling, all tasks are carried out with the highest levels of care, ensuring the well-being of all involved.



MEMBER OF SSC GROUP

About 120
underground
drill rigs
mobilized in
mines across
South Africa

OUR UNDERGROUND DRILL RIG FLEET



MetreEater – Pneumatic
MetreEater – **37** Kw Hydraulic

Adder – **22** Kw Hydraulic

Adder – **37** Kw Hydraulic

Viper – **45** Kw Hydraulic

Mamba – **45** Kw Hydraulic

Mamba – **75** Kw Hydraulic

LM™ 75 – **75** Kw Hydraulic

LM™ 90 – **90** Kw Hydraulic



Planned Maintenance Programs

At Lesedi Drilling, we understand that maintaining equipment is critical to operational efficiency. Our planned maintenance programs are designed to minimize downtime and extend the lifespan of your drilling equipment. With regular inspections, proactive parts replacement, and expert calibration, we ensure that your machinery remains in peak condition, allowing for uninterrupted safe productivity and reduced repair costs.



MEMBER OF SSC GROUP

Pneumatic or 37 kW hydraulic underground diamond drill

METRE EATER®

Supplier/Manufacturer	HUD Mining Supplies
Drilling method	Underground pneumatic or hydraulic core drilling
Drilling depth capacity (AQ Rods)	190 m Horizontal
	150 m Vert (Up/down)
Drill weight	125 kg (incl. Silencer)
Bar clamp weight	25 kg
Rod Puller weight	77 kg
Fully integrated power pack and control console	37 kW power pack
Max operating pressure	21MPa main stage 18 MPa secondary stage
Oil reservoir	210 L (Inc. in skid frame)
Air consumption	8 to 20m ³ /min (280 to 700cfm)
Spindle speed	Up to 2 000 rpm
Angle of drilling	Designed to drill through 360°





MEMBER OF SSC GROUP

Underground
22- or 37-kW
hydraulic
exploration drill

ADDER SV-370 EXPLORATION DRILL

Supplier/Manufacturer	Shaw Equipment
Drilling depth	
Vertical up	250 m (AQ) / 200 m (BQ)
Vertical down	400 m (AQ) / 375 m (BQ)
Horizontal	375 m (AQ) / 350 m (BQ)





MEMBER OF SSC GROUP

Underground
feed frame

ADDER SV-370 FEED FRAME

Equipment	Feed Frame
Feed length	750 mm
Feed frame length	2 098 mm
Max feed force	25 kN (both directions)
Max drill feed rate	750mm/ min
Max rod handling speed	2 sec/800mm
Weight	150 kg
Chuck	Hydraulic – self centred 12 jaw collet
Axial holding capacity	50 KN
Max rotational speed	2 052 rpm (1:1 gear ratio)
	1 368 rpm (1:2 gear ratio)
Max torque	74 Nm (1:1 gear ratio)
	114 Nm (1:2 gear ratio)
Max break out torque	152 Nm @ 240 bar
Axial holding capacity	20 KN





MEMBER OF SSC GROUP

Underground
power pack

ADDER SV-370 POWER PACK

Equipment	Power pack
Motor	22 or 37 kW / 525 V Flame proof optional
Rotation unit	200 bar
Chuck	110 bar
Feed cylinder	110 bar
Water pump drive	120 bar
Filter	10 Micron
Oil cooler	Universal Oil/water 10 kW @ 56 l/min
Oil tank	150 l (filled with hand pump)
Light	LED flame proof
Starter box	Flame proof / phase reversal protection / e-stop
Length	1 800 mm
Width	900 mm
Height	1 250 mm
Weight	900 kg





MEMBER OF SSC GROUP

Underground 45
kW hydraulic
exploration drill

VIPER SV-450 EXPLORATION DRILL

Supplier/Manufacturer	Shaw Equipment
Drilling depth	
Vertical up	250 m (AQ) / 200 m (BQ)
Vertical down	400 m (AQ) / 375 m (BQ)
Horizontal	375 m (AQ) / 350 m (BQ)





MEMBER OF SSC GROUP

Underground
feed frame

VIPER SV-450 FEED FRAME

Equipment	Feed Frame
Feed length	1200 mm
Feed frame length	2350 mm
Max feed force	34 kN (both directions)
Max drill feed rate	2.6 m / min
Max rod handling speed	1.5 sec/800mm
Weight	250 kg
Chuck	Hydraulic – self centred 12 jaw collet
Axial holding capacity	72 KN
Max rotational speed	1765 rpm (1:1 gear ratio)
	883 rpm (1:2 gear ratio)
Max torque	120 Nm (1:1 gear ratio)
	264 Nm (1:2 gear ratio)
Max break out torque	264 Nm @ 240 bar
Axial holding capacity	30 KN



VIPER SV-450 POWER PACK

Equipment	Power pack
Motor	45 kW / 525 V Flame proof optional
Rotation unit	240 bar
Chuck	75 bar
Feed cylinder	150 bar
Water pump drive	120 bar
Filter	10 Micron
Oil cooler	Universal Oil/water 10 kW @ 56 l/min
Oil tank	150 l (filled with hand pump)
Light	LED flame proof
Starter box	Flame proof / phase reversal protection / e-stop
Length	1 800 mm
Width	900 mm
Height	1 250 mm
Weight	900 kg





MEMBER OF SSC GROUP

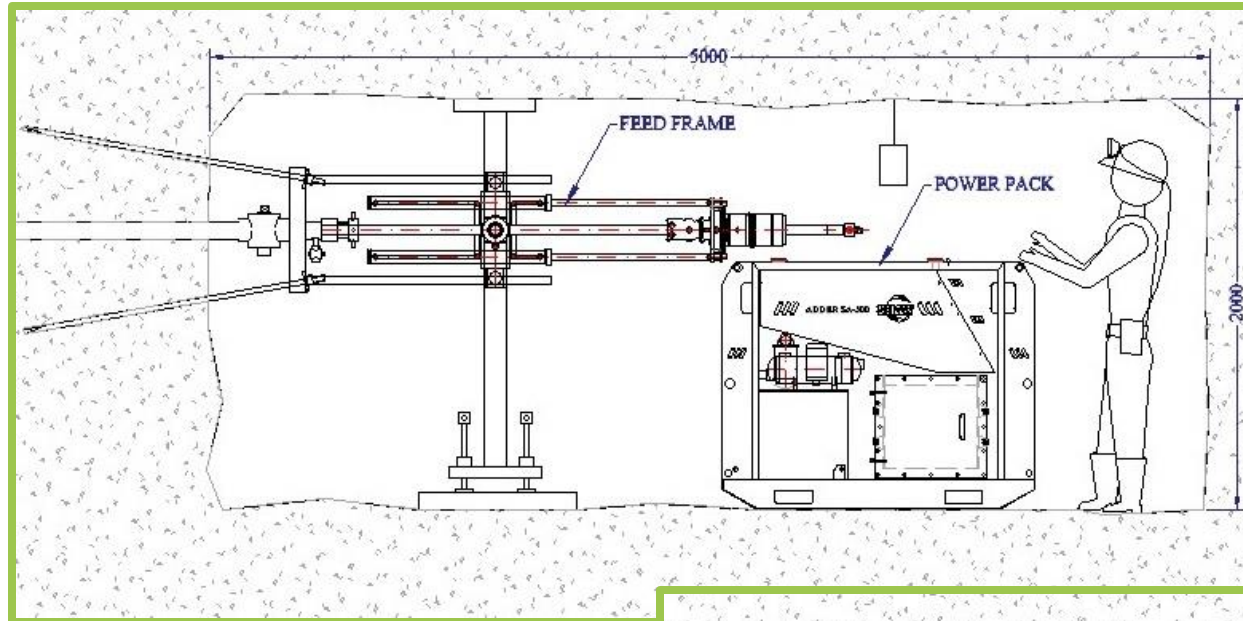
Underground
45- or 75-kW
hydraulic
exploration drill

MAMBA SM-750 EXPLORATION DRILL

Supplier/Manufacturer	Shaw Equipment
Drilling depth	
Vertical up	250 m (AQ) / 350 m (BQ) / 225 m (NQ)
Vertical down	400 m (AQ) / 900 m (BQ) / 650 m (NQ)
Horizontal	375 m (AQ) / 1 100 m (BQ) / 800 m (NQ)

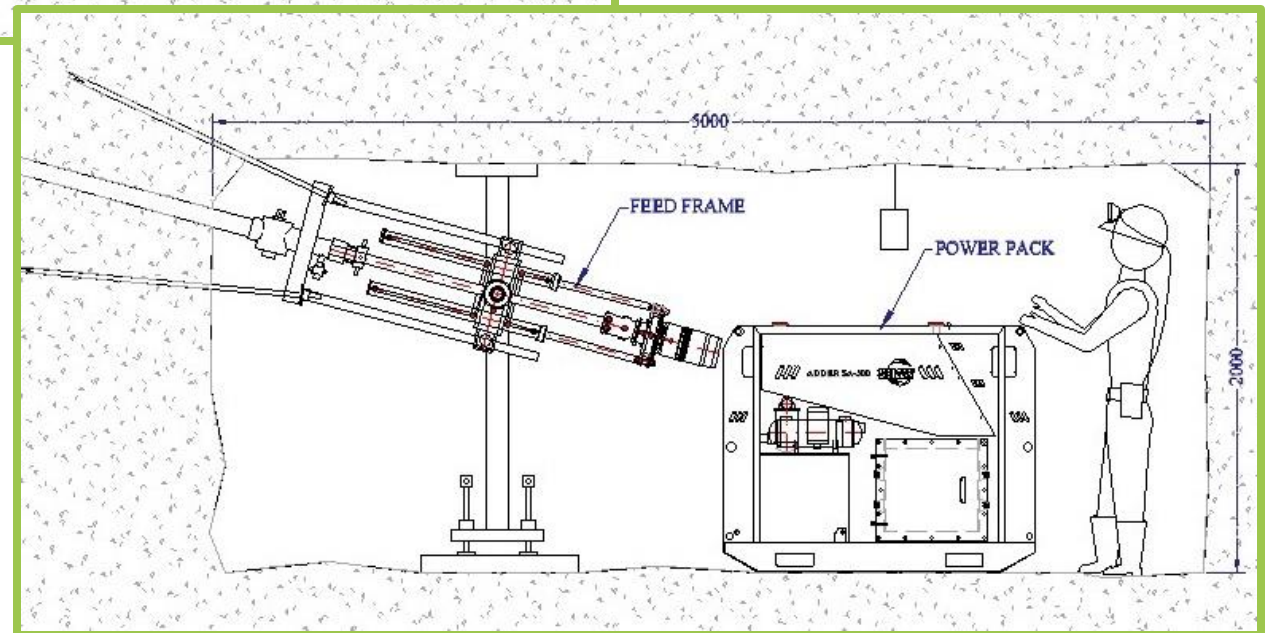


DRILL SITE LAYOUT SKETCH



Horizontal drilling layout

Vertical drilling layout





MEMBER OF SSC GROUP

Underground
75- or 90-kW
hydraulic
exploration drill

LM™ 90 EXPLORATION DRILL

Supplier/Manufacturer	Boart Longyear
Drilling depth	
Vertical up	820 m (AQ) / 430 m (BQ) / 260 m (NQ) / 130 (HQ)
Vertical down	1 500 m (AQ) / 1 350 m (BQ) / 990 m (NQ) / 610 m (HQ)
Horizontal	1 500 m (AQ) / 1 500 m (BQ) / 1 190 m (NQ) / 610 m (HQ)
With cylinder reversed	1 500 m (AQ) / 930 m (BQ) / 620 m (NQ) / 360 m (HQ)



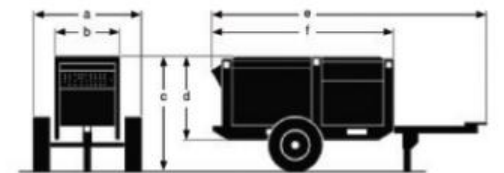
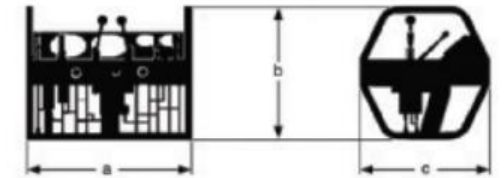
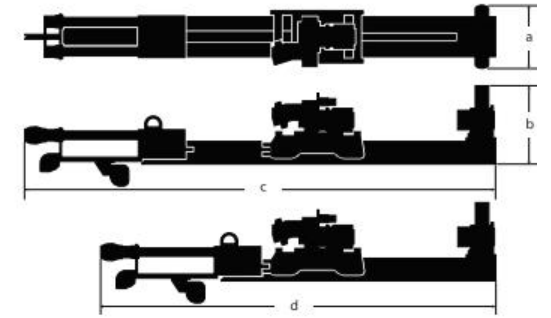


MEMBER OF SSC GROUP

Underground
feed frame

LM™ 90 EXPLORATION DRILL

Feed length	1830 mm
Max rated pushing force	70.3 kN @ 31 MPa
Max rated pulling force	141.3 kN @ 31 MPa
Rated carriage speed	0.7 m/s per complete cycle
Normal rod handling speed	Approx. 15 n/min
Feed frame weight	1 520 kg
Rotation unit weight	235 kg (Incl. chuck)
Rod clamp assembly weight	170 kg
Control panel weight	42 kg (plus 42 kg for hoses)
Control panel width	575 mm
Control panel height	521 mm
Control panel length	480 mm
Power pack weight	1 520 kg
Power pack width	1 318 mm
Power pack height	1 526 mm
Power pack length	2 893 mm





MEMBER OF SSC GROUP

Lesedi Drilling
has access to
surface drilling
rigs

OUR SURFACE DRILL RIG FLEET

Lesedi Drilling currently does not own any surface drill rigs but has access to the following equipment to commence surface drilling operations within normal mobilization timelines:

Boyles C6C

Explorac 100





MEMBER OF SSC GROUP

Surface
Diamond Core
Drill Rigs

BOYLES C6C

The Boyles C6/C6C surface core drilling rig is compact and powerful for all ground conditions, terrains, and environments. The rig is designed with safety in mind, minimizing the risk of personal injury during operation.

Supplier/Manufacturer	Epiroc
Drilling method	Surface core drilling
Drilling depth capacity	0 m - 1 824 m
Chuck inner diameter	124 mm
Max. torque	7 602 Nm
Feed force	60 kN
Pull force	138 kN
Max. rod size	210 mm
Installed power	168 kW
Control system	Direct hydraulic
Height	2 625 mm
Length	6 525 mm
Width	2 817 mm
Weight	9 000 kg





MEMBER OF SSC GROUP

Surface
Diamond Core
Drill Rigs

EXPLORAC 100

The Explorac 100, available on a crawler chassis, is designed specifically for reverse circulation drilling and other down-the-hole drilling applications.

Supplier/Manufacturer	Epiroc
Drilling method	Down-the-hole (Reversed Circulation)
Rod length	3 m
Drilling depth capacity	0 m - 250 m
Max. torque	7 475 Nm
Feed type	Cylinder with chain
Feed force (restricted)	60 kN
Pull force	100 kN
Engine	Cummins QSB 4.5 82 kW, Tier 3
Control system	RCS with radio remote
Carrier option	Fixed track
Height	3 000 mm
Length	7 800 mm
Width	2 300 mm
Weight	13 500 kg





MEMBER OF SSC GROUP

Dry drilling techniques
Manufacturing of drilling accessories

INNOVATION

Dry Drilling Techniques

In conditions where water is scarce or drilling with fluids is impractical, our dry drilling techniques offer an effective alternative. These methods allow for fast and efficient drilling without the need for water circulation, reducing environmental impact while maintaining the integrity of the project. Dry drilling is ideal for arid regions or environmentally sensitive sites.



Drilling Accessories

Lesedi Drilling purchases all its drilling accessories from one of its associate companies in the SSC Group. These products are locally manufactured and provides Lesedi Drilling the ability to develop bespoke and condition specific drilling accessories ensuring that it provides the most efficient drilling parameters to its clients.



MEMBER OF SSC GROUP

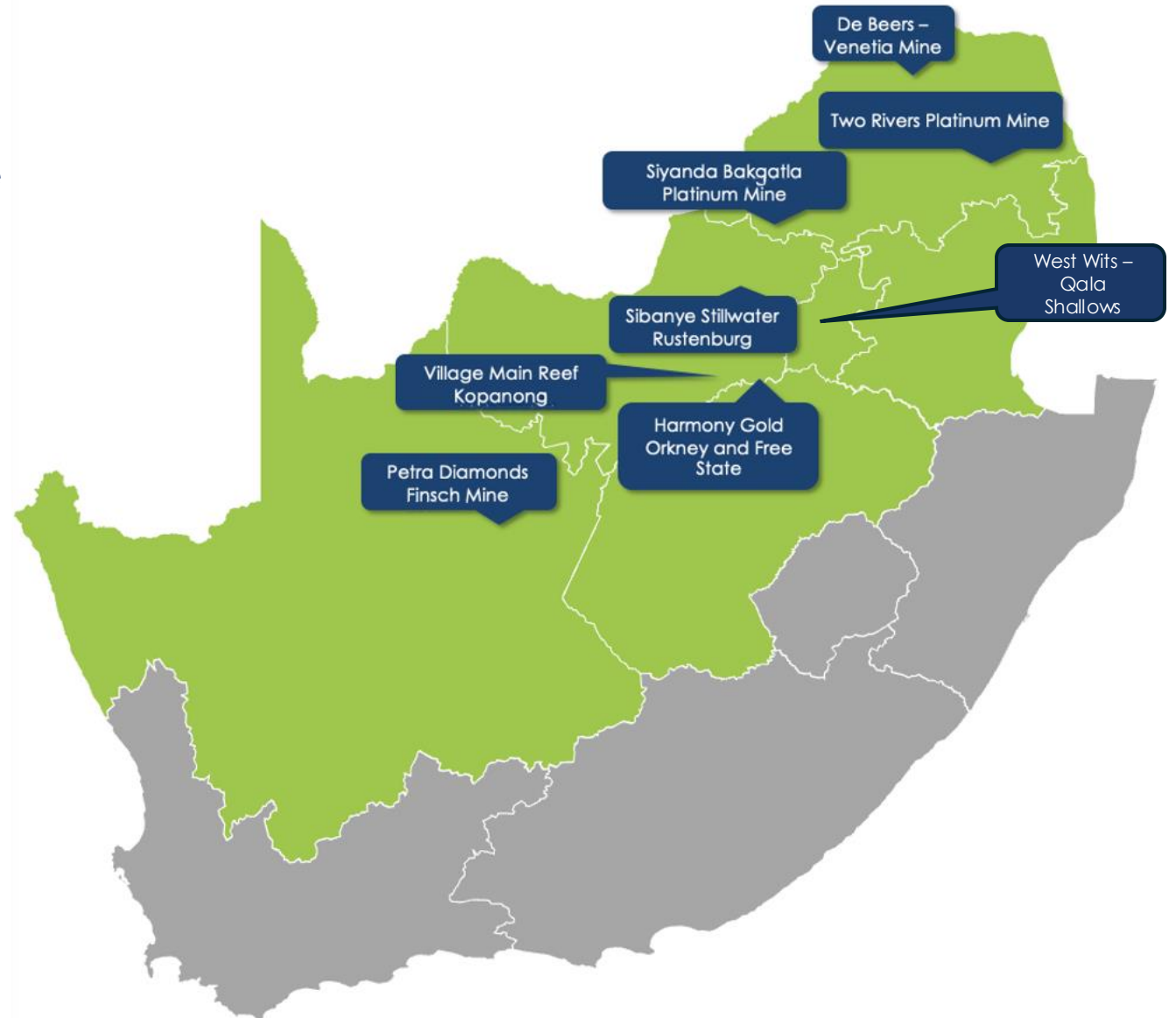
Mines where
Lesedi Drilling is
providing
underground
drilling services

CURRENT OPERATIONS

Lesedi Drilling operates throughout South Africa, with key projects in the Free State, Limpopo, Northwest, and Northern Cape provinces.

We are proud to support major mining operations in these regions, partnering with some of the country's most well-established mining companies.

Lesedi Drilling is geared for expansion and growth in both underground and surface exploration drilling, with plans to offer our expertise to the broader African continent.





MEMBER OF SSC GROUP

Experienced Directors and management



Fred Arendse
Chairman & CEO

Fred is a mining entrepreneur and founder of the SSC Group, with 3 decades of experience in the mining industry and serves on numerous Boards. Fred plays an active leadership role for peace and stability in the SA mining industry. He has a degree in HR, and Business Management. He is also the Founding Chairman of the Foundation for Peace and Prosperity (NPO) and the founding President of the Junior Mining Council of South Africa.



Martin Schermers
CFO & COO

Martin has 4 decades of experience across various fields predominantly in the mining sector and a background in finance. Martin has sterling experience in governance, internal controls, financial statements, reporting, IFRS, compliance, and risk management. Martin holds a B.Compt degree and is an AGA(SA).



Dr Godknows Mudimu
Director

Godknows is an admitted attorney of the High Court of South Africa, with over a 10 years of experience in mining, human rights and community development. He holds a Ph.D in mining, an LLB in Human Rights, an LLB and a BSocSc which allows him to deliver legal strategies aligned with corporate goals and sustainable development imperatives. In his position, he provides expert legal advice on transactions, projects, employment matters, mining and regulatory matters.



Andre Dreyer
Group Operations Manager

André has over 20 years of mining experience. He holds an Explosives Engineers Certificate of Competency, a Civil and Opencast Blasting Certificate, various Mining Machinery Operating Qualifications and is currently completing his Diploma in Mining Engineering.



MEMBER OF SSC GROUP

Experienced management



Carel Minnie

Underground Drilling Manager

With over 30 years of extensive experience in exploration drilling and high-pressure injection (grouting), Carel has developed a strong skill set and deep industry knowledge. After matriculating in 1992, he completed courses in finance budgeting and mining. In 2011, he joined Lesedi Drilling, further enhancing his expertise with on all the underground drilling machines utilised by Lesedi Drilling.



Johan du Plooy

Underground Drilling Manager

Johan has over 36 years of experience in drilling and grouting. He started his career with Anglo American and spent time with Boart Longyear before joining Lesedi Drilling. He has experience on all the underground machines that Lesedi Drilling utilise. He completed training on several different surface drilling machines in the USA. He has completed a course in finance management and has been in a management position for 20 years.



Johan Roets

Surface & Underground Manager

Johan has over 40 years' experience in surface and underground core drilling. He started his drilling career in 1984 with Boart Longyear as a learner Supervisor and was later appointed as Supervisor, Foreman and Site Manager. He spent 2 years at Master Drilling before joining Lesedi Drilling in 2016. He has experience on large surface rigs, as well as all the underground drilling machines utilized by Lesedi Drilling. He is further experienced in high pressure injection grouting and using sonic machines.



Michael Mohammed

Underground Drilling Manager

Michael has 32 years of extensive experience in exploration drilling and high-pressure injection (grouting). His responsibilities include maintaining safety, training personnel, managing resources, and achieving production targets. Michael is proficient in operating all the underground drilling machines utilised by Lesedi Drilling as well as various surface drill rigs.



MEMBER OF SSC GROUP

Experienced Management



Gerhard Blignaut
Drilling Optimisation Manager

Gerhard has 25 years of diamond drilling, water sealing and rock consolidation experience. The majority of his experience was obtained in a deep level mining environment. He has surface and underground exploration drilling experience utilising various underground drill rigs including all those utilised by Lesedi Drilling. He has experience on various surface machines including Diamec, DD210 and Devico equipment. Over the years he has been involved in building and developing hydraulic power packs and drilling machines.



Jonathan Pilkington
Financial Manager

Jonathan completed his articles and spent 3 years in the manufacturing industry before joining Lesedi Drilling in 2021. In his previous role he was instrumental with implementation of a new ERP system. Johnathan holds a B.Com degree and is an AGA(SA) and tax practitioner.



Thabo Mogane
Underground Drilling Manager

Thabo has 25 years of drilling experience and started his career as a machine operator with Boart Longyear in 2000. He spent some time with Sefikile Drilling before joining Lesedi Drilling in 2006. He has worked his way up from machine operator to his current position and is efficient in all the underground machines that Lesedi Drilling utilises.



Gerhard Victor
Chief Safety Officer

Gerhard Victor is a seasoned mining professional with over 40 years of experience in underground mining. He started his career at Anglo American Saaiplaas Mine as a learner official, later qualifying as a production supervisor. Gerhard spent 8 years on the proto (mine rescue) team, gaining extensive hands-on experience in various mining methods, including stoping, longwall, and vertical mining.



MEMBER OF SSC GROUP

Experienced management



Nico van Rooyen
Workshop Manager

Nico has 19 years of experience maintaining all types of exploration drilling equipment. He has experience with planned maintenance schedules and has the capacity to manage the complete fleet on Lesedi Drilling equipment with a qualified team assisting him. He is responsible ensuring the smooth running of the Lesedi Drilling workshop and ensuring that the equipment for the training centre is maintained.



Arnold Meke
Human Resources Coordinator

Arnold has over 16 years of experience in strategic human resources management, industrial relations, and talent acquisition. He has a proven ability to develop and implement HR strategies that align with organizational goals, drive diversity initiatives, and streamline processes using HR technology. He is proficient in ATS, HRIS platforms, and fostering inclusive workplace cultures. He has extensive experience in dealing with conflict and union matters.



Vivian Makoro
Exploration Geologist

Vivian is a Geologist with hands-on experience in exploration, geotechnical, and seismic projects. She holds a BSc in Geology. She is responsible for optimising hole delivery and maximising core value by providing data-driven geological guidance, ensuring disciplined core handling, and maintaining close coordination with drilling crews and site management. Her role bridges field operations and geological analysis.



Chane Swanepoel
Safety Coordinator

Chane has 8 years of experience in the mining industry, 6 of those focused specifically on mining safety. She started her mining career as a general worker in 2017. She earned a Competent B certificated in 2018 and commenced her career path in safety when she became a full time safety representative and completing a safety certificate. She has completed her Comsoc 1,2 and 3, along with an Safety Auditors Certificate, legal liability and risk assessment training.



MEMBER OF SSC GROUP

Our clients





MEMBER OF SSC GROUP



CONTACT US:

SSC Group Business Development

Worgan-lee@sscgroup.co.za

+27 12 665 5336

www.lesedidrilling.com

www.SSCgroup.co.za

Golf Gardens Office Park Unit 8
c/o John Vorster and Marco Polo
Centurion Johannesburg
South-Africa